

**GC GRAMMAS CONSULTANTS**  
 ARCHITECTURE & ENGINEERING  
 228 ROUTE 104 SUITE 208, FARMINGDALE, NY 11735  
 TEL.: 631-593-6005  
 FAX: 631-593-6006  
 E-MAIL: HRC@GADLCON

REVISIONS		REVISIONS			
NO.	DATE	REMARKS	NO.	DATE	REMARKS
1	7-12-23	REVISED AS PER VENDOR COMMENTS			

THIS PLAN AND ALL INFORMATION CONTAINED HEREIN ARE THE PROPERTY OF GC GRAMMAS CONSULTANTS AND ARE NOT TO BE REPRODUCED OR TRANSMITTED IN ANY FORM OR BY ANY MEANS, ELECTRONIC OR MECHANICAL, INCLUDING PHOTOCOPYING, RECORDING, OR BY ANY INFORMATION STORAGE AND RETRIEVAL SYSTEM, WITHOUT THE WRITTEN PERMISSION OF GC GRAMMAS CONSULTANTS.

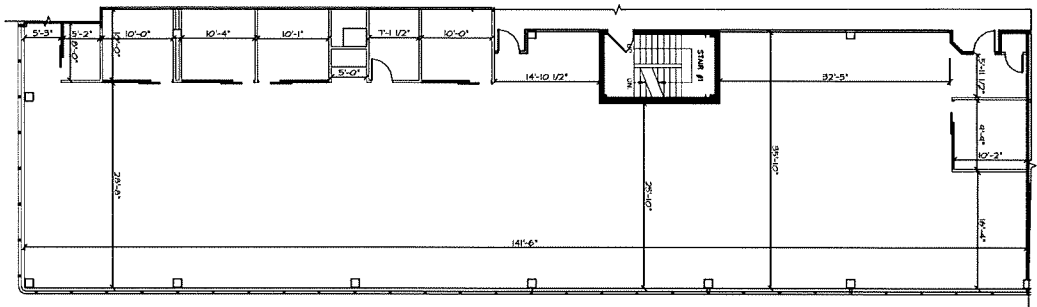
PROPOSED SUITE LAYOUT FOR:  
 SUITE 315  
**445 MELVILLE LLC.**  
 445 BROADHOLLOW ROAD  
 MELVILLE, NEW YORK 11747

DATE: 7-1-23  
 SCALE: AS NOTED  
 DRAWN: CAS  
 JOB NO.: 2335

THIRD FLOOR SUITE LOCATION PLAN  
 PLAN, SUITE 315 FLOOR PLAN  
 DRAWING NO.  
**A-1.0**

**A** SUITE 315 FLOOR PLAN

SCALE: 1/8" = 1'-0"



**1** THIRD FLOOR SUITE LOCATION PLAN

SCALE: N.T.S.

