

GC GRAMMAS CONSULTANTS
 ARCHITECTS & ENGINEERS P.C.
 208 ROUTE 104 SUITE 208 FARMINGDALE, NY 11735
 TEL.: 631-349-6905 FAX: 631-349-6908
 E-MAIL: KCDC @ AOL.COM

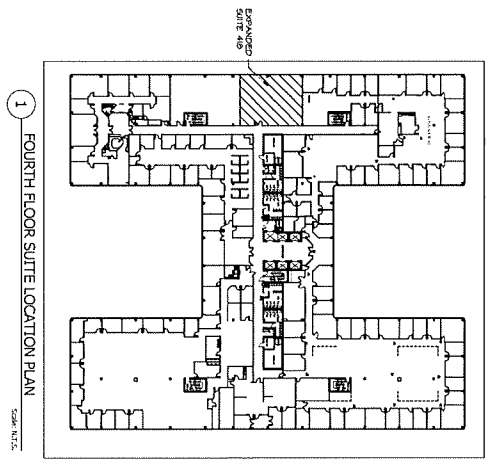
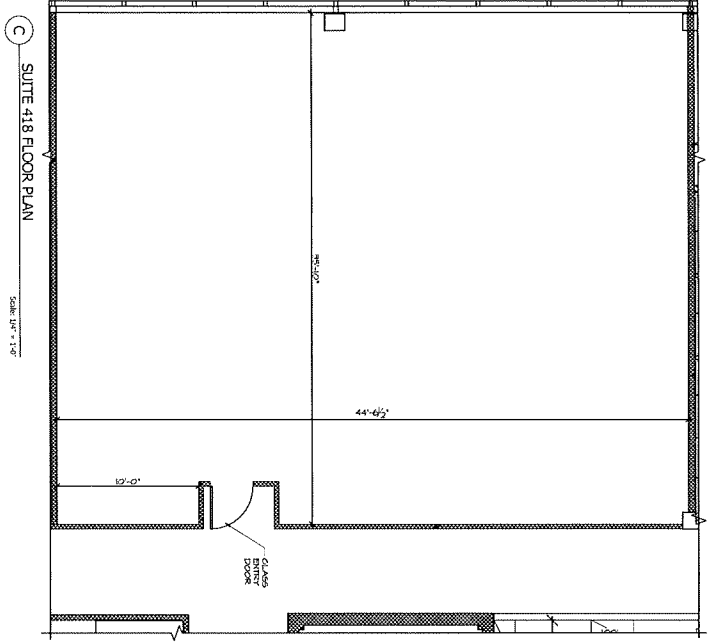
REVISIONS		ISSUED FOR	
NO.	DATE	NO.	DATE
1	1/17/24		

THIS PLAN HAS BEEN APPROVED BY THE ARCHITECT IN WITNESS WHEREOF HE HAS HEREON SET HIS HAND AND SEAL THIS 17TH DAY OF JANUARY 2024 IN THE CITY AND COUNTY OF SUFFOLK COUNTY, NEW YORK.

SUITE 418
 445 MELVILLE LLC.
 445 BROADHOLLOW ROAD
 MELVILLE, NEW YORK 11747

DATE: 1/19/24
 SCALE: AS NOTED
 DRAWN: C.A.S.
 JOB NO: 2402

SUITE LOCATION PLAN PROPOSED SUITE 418 EXPANSION PLAN
 DRAWING NO.
A-1.0



APPROVED BY _____